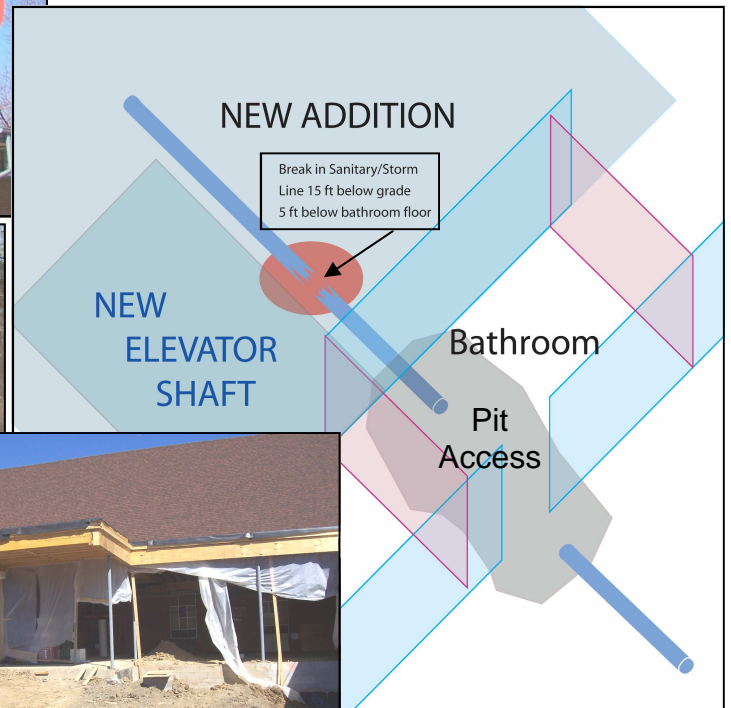




CONSTRUCTION DISASTER AVERTED



As the First Methodist Church of Garden City, Michigan, eagerly anticipated the new addition to their building, especially the elevator to allow easier access to the fellowship hall for those unable to navigate the stairs, an issue developed with a 6" combined storm-sanitary line that was unknowingly broken during the excavating of the elevator footings. The sanitary line break shut down the use of the building's kitchen and basement bathrooms. By the time the collapsed pipe was identified, the construction phase had completed the roughing in of the new addition which was directly over the broken sanitary.

American Pipe Lining – Great Lakes, using CIPP (cured in place pipe) technology and tools, repaired the break working through the 6" pipe in a pit excavated in the men's bathroom. After the repair the combined sanitary-storm pipe was restored to better than new condition with a 66' liner.

The church now has its kitchen, bathrooms and storm sewer back online, and avoided any demolition of the completed new construction to repair the break.

**NEW ELEVATOR AND FIRST PHASE
OF CONSTRUCTION SAVED.
DISASTER AVERTED.**



31675 W Eight Mile Road - Livonia, MI 48152 248-888-7777
www.ampipelining.us www.ampipelining.com